

Jukes & Co

Estate Agents



Suffolk Road

, London, SE25 6EY

£345,000

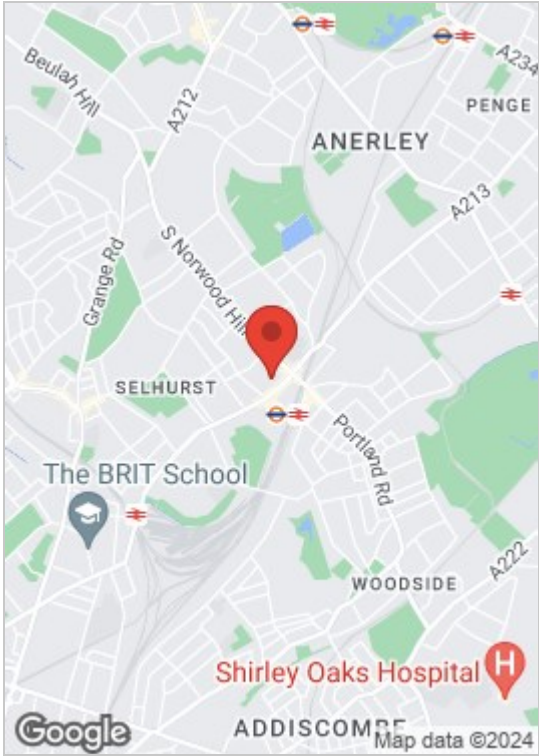


Discover the epitome of contemporary living with Jukes and Co's latest offering—a spacious and stylish two-bedroom ground floor victorian conversion flat that exceeds the ordinary. Boasting a modern interior adorned with high-end finishes, this residence showcases a generously proportioned kitchen/diner that seamlessly integrates into the overall aesthetic. The accommodation is not only aesthetically pleasing but also functionally efficient, complete with its own front door for added privacy and convenience and own garden.

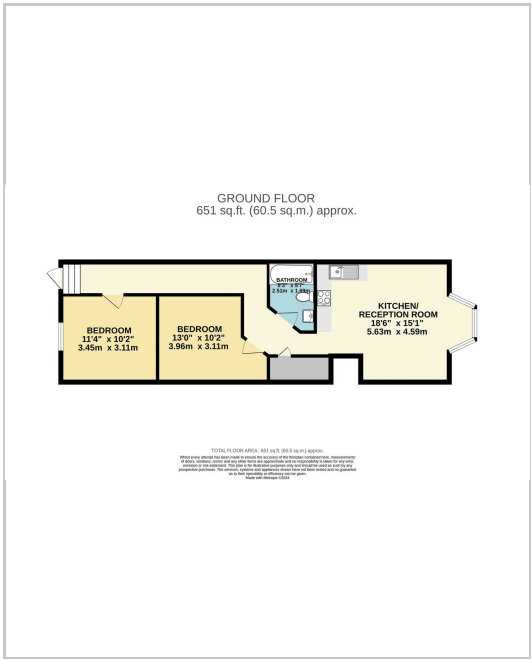
Situated in the highly sought-after Suffolk Road, this property enjoys an unrivalled location, just a leisurely stroll away from the bustling Norwood Junction Station. This strategic position ensures a swift 12-minute commute to London Bridge, with easy access to other key destinations such as Victoria, East Croydon, Clapham Junction, and Gatwick. Beyond its proximity to major transportation hubs, Suffolk Road offers a lifestyle of convenience, being in close proximity to local shops, bus stops, and an array of restaurants. Schools, parks, and a leisure centre add to the neighbourhood's charm, while the nearby South Norwood Lakes provide a tranquil retreat, making this residence an ideal choice for those seeking both vibrancy and serenity. With its prime location, modern amenities, and thoughtful design, this residence beckons you to embark on a new chapter of comfortable and stylish living.



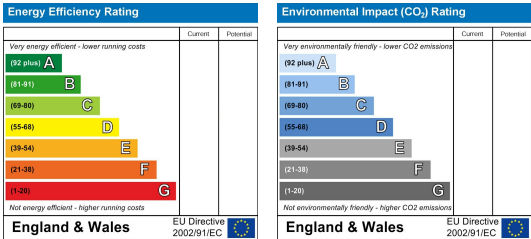
Area Map



Floor Plan



Energy Efficiency Graph



These particulars, whilst believed to be accurate are set out as a general outline only for guidance and do not constitute any part of an offer or contract. Intending purchasers should not rely on them as statements of representation of fact, but must satisfy themselves by inspection or otherwise as to their accuracy. No person in this firms employment has the authority to make or give any representation or warranty in respect of the property.